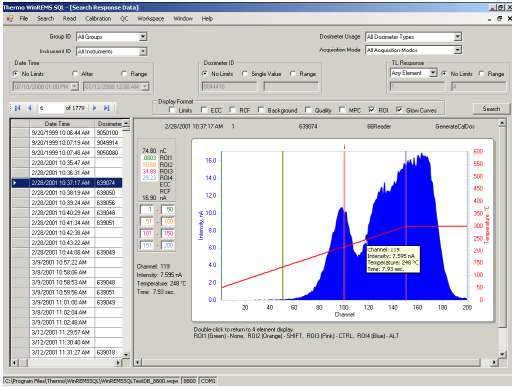


# WinREMS SQL

Proven WinREMS capabilities with unrestricted data base size



## Key Features and Benefits

- Proven WinREMS capabilities
- The multiple software databases residing within WinREMS SQL were developed upon Microsoft SQL Server 2005 thus eliminating any database size and large database performance restrictions
- Allows easy importation of WinREMS data from previous versions for backward compatibility
- Reports can be customized using the software package "Crystal Reports® XI Release 2". Note: Crystal Reports is not installed as part of WinREMS-SQL

WinREMS SQL is a software application that directs the operation of the Harshaw TLD reader. It can be used for Harshaw TLD 6600 and 8800 readers. WinREMS SQL receives dosimetry data from the reader, then it stores, retrieves, processes the data and presents it in a meaningful form.

The WinREMS software resides on a commercially available personal computer and it is connected to the TLD reader through a RS-232 serial cable or USB-to-RS232 converter.

# Options and Specifications

## More features

- Enhanced and more efficient response database search capability
- Enhanced and more efficient calibration card, reader and dosimeter calibration procedures
- Records all changes in values for card ECC and reader RCF and records any changes made to heating profiles, acquisition setups or electronics QC setup parameters
- Allows export of data in the following formats: ASCII, PDF, Microsoft Excel, Microsoft Word, and rich text formats
- Allows for a configurable response data display with the capability of sorting on any field. SQL is a industry standard what means a customer can create his own data base function and add "home made" software (that accesses the data base)

## Screen shots of RCF history and ECC history search screens:

TTP Title	TTP Number	Instrument ID	Date Calibrated	RCF I	RCF II	RCF III	RCF IV	Units
StandardCardTTP	0	8800ka	1/12/2007 10:26:43 AM	0.793	0.793	0.085	0.250	µSv
StandardCardTTP	0	8800ka	1/12/2007 10:26:42 AM	0.793	0.797	0.170	0.858	µSv
StandardCardTTP	0	8800ka	1/12/2007 10:26:43 AM	1.077	1.126	0.254	0.898	µSv
StandardCardTTP	0	8800ka	1/12/2007 10:26:43 AM	1.437	1.513	0.339	1.188	µSv
StandardCardTTP	0	8800ka	1/12/2007 10:26:46 AM	1.796	1.882	0.424	1.486	µSv
StandardCardTTP	0	8800ka	6/12/2007 11:21:40 AM	0.283	0.286	0.071	0.235	µSv
StandardCardTTP	0	8800ka	1/12/2007 10:43:11 AM	0.227	0.229	0.057	0.188	µSv
StandardCardTTP	0	8800ka	1/12/2007 10:43:11 AM	0.453	0.458	0.114	0.377	µSv
StandardCardTTP	0	8800ka	1/12/2007 10:43:11 AM	0.680	0.686	0.171	0.563	µSv
StandardCardTTP	0	8800ka	1/12/2007 10:43:11 AM	0.907	0.915	0.228	0.753	µSv
StandardCardTTP	0	M4600Plus	6/13/2007 2:22:57 PM	2.013	2.406	0.704	1.575	µSv

Dosimeter ID	Date Time	Dosimeter Usage	I	II	III	IV	TTP
004950	1/12/2007 9:52:29 AM	Calibration Dosimeter	0.333	1.074	1.418	1.091	StandardCardTTP
004942	1/12/2007 11:00:59 AM	Field Dosimeter	0.980	0.934	1.029	1.144	StandardCardTTP
004832	1/12/2007 11:02:50 AM	Field Dosimeter	0.961	0.900	1.404	1.152	StandardCardTTP
059676	1/12/2007 9:47:01 AM	Calibration Dosimeter	0.993	0.999	0.776	0.871	StandardCardTTP
059676	1/12/2007 9:47:01 AM	Calibration Dosimeter	0.993	0.999	0.776	0.871	StandardCardTTP
059677	1/12/2007 9:45:12 AM	Calibration Dosimeter	0.900	1.038	0.670	0.649	StandardCardTTP
059677	1/12/2007 9:45:12 AM	Calibration Dosimeter	0.900	1.038	0.670	0.649	StandardCardTTP
059684	1/12/2007 9:48:50 AM	Calibration Dosimeter	0.942	0.980	0.738	0.920	StandardCardTTP
059684	1/12/2007 9:48:50 AM	Calibration Dosimeter	0.942	0.980	0.738	0.920	StandardCardTTP
1203	8/16/2007 1:28:43 AM	Bad Dosimeter	0.923	0.921	0.923	0.923	ElectroCardTTP
1070	8/16/2007 11:38:43 AM	Calibration Emnergy	0.957	0.957	0.957	0.957	ElectroCardTTP
1072	8/16/2007 1:30:41 PM	Field Emnergy	1.068	1.068	1.068	1.068	ElectroCardTTP
1072	8/16/2007 1:30:41 PM	QC Emnergy	1.068	1.068	1.068	1.068	ElectroCardTTP
1145	8/16/2007 11:31:43 AM	Bad Dosimeter	1.278	1.278	1.278	1.278	ElectroCardTTP
1145	8/16/2007 11:31:43 AM	Bad Dosimeter	1.180	1.180	1.180	1.180	ElectroCardTTP
119	8/16/2007 2:06:06 PM	Field Emnergy	0.957	0.957	0.957	0.957	ElectroCardTTP
119	8/16/2007 2:06:06 PM	Field Emnergy	0.957	0.957	0.957	0.957	ElectroCardTTP
12031	1/16/2007 1:46:13 PM	Calibration Emnergy	1.007	1.007	1.007	1.007	DataSTTP
12060	1/16/2007 1:50:15 PM	Calibration Emnergy	0.975	0.975	0.975	0.975	DataSTTP
1218	8/16/2007 1:59:11 PM	Bad Dosimeter	0.960	0.960	0.960	0.960	ElectroCardTTP
1218	8/16/2007 1:59:11 PM	Bad Dosimeter	0.960	0.960	0.960	0.960	ElectroCardTTP
12410	1/16/2007 1:50:17 PM	Calibration Emnergy	0.962	0.962	0.962	0.962	DataSTTP
12423	1/16/2007 1:49:15 PM	Calibration Emnergy	1.012	1.012	1.012	1.012	DataSTTP
12432	1/16/2007 1:49:17 PM	Calibration Emnergy	0.978	0.978	0.978	0.978	DataSTTP
12485	1/16/2007 1:50:14 PM	Calibration Emnergy	0.981	0.981	0.981	0.981	DataSTTP

Note: Microsoft SQL Server and Crystal Reports are not part of the delivery.

© 2010 Thermo Fisher Scientific Inc. All rights reserved. Windows is a registered trademark of Microsoft Corporation in United states and other countries. All other trademarks are the property of Thermo Fisher Scientific Inc. and its subsidiaries. Results may vary under different operating conditions. Thermo Fisher Scientific makes no warranties, expressed or implied, in this product summary. Specifications, terms and pricing are subject to change. Not all products are available in all countries. Please consult your local sales representatives for details. LITWinREMS\_SQL-e-V1.0\_24Feb10

### Europe, Africa, Middle East & Countries Not Listed

Frauenauracher Strasse 96 +49 (0) 9131 998-226  
 D 91056 Erlangen, Germany +49 (0) 9131 998-172 fax  
 customerservice.eid.erlangen@thermofisher.com

### China

7th Floor, Tower West, Yonghe Plaza +86 10 8419 3588  
 No. 28 Andingem E. Street, Beijing, 100007 China +86 10 8419 3581 fax  
 info.eid.china@thermofisher.com

### Singapore

11 Biopolis Way, Helios, Units #12-07/08 +65 6478 9728  
 Singapore 138667 +65 6478 9505 fax  
 info.eid.singapore@thermofisher.com

### United Kingdom

Bath Road, Beenham, +44 (0) 118 971 5042  
 Reading RG7 5PR United Kingdom +44 (0) 118 971 2835 fax  
 customerservice.eid.beenham@thermofisher.com

### USA, Canada, Mexico, Central & South America

27 Forge Parkway +1 (508) 553 1700  
 Franklin, MA 02038 USA +1 (800) 274 4212 US toll-free  
 info.eid@thermofisher.com +1 (508) 520 2815 fax

### India

Plot No. C -327, T.T.C. Industrial Area, Pawne +91-22-41578800  
 Navi Mumbai 400 705, India +91-22-41578801 fax  
 info.eid.india@thermofisher.com

www.thermo.com/rmp

**Thermo**  
SCIENTIFIC