



RadEye PRD Safety Kit





RadEye PRD Safety Kit

The Thermo Scientific RadEye PRD is the first choice for highly portable, personal radiation detection in the recycling industry. The well-proven RadEye, which has served thousands of law-enforcement and homeland security professionals since 2005, is now available in conjunction with an application-tailored "RadEye Safety Kit." Geared specifically to the industrial user, this configuration provides the following advantages and possibilities:

- Small size and belt holster means it can be worn at all times for non-stop vigilance at your facility
- Adapter and extender poles allow your reach to be extended up to 14 feet (4 m) enabling easier and faster searching
- Data capture hardware & software allow target vehicle radiation data to be tagged with user input meta-data, for better quality control/documentation
- Lutetium test adapter uses naturally occurring material of very low specific activity to verify the performance of your PRD or other radiation detection instrumentation safely and accurately

Radiation Detection is Personal Protection

The Thermo Scientific RadEye PRD offers unmatched sensitivity to gamma radiation and true dose rate calculation. When worn in its holster, the RadEye PRD protects its owner at all times long before radiation health concerns come into play and with this roving detector orphan sources may be found at your facility. The RadEye's short handle provides dramatic reduction in the dose rate at the user's hand if the RadEye PRD is close to the source (compared to the RadEye PRD directly held in the hand). Optional 4 ft (1.2 m) and 14 ft (4 m) extensions ease the measurement of vehicle loads or piles of suspicious material. The large backlit LCD, the bright Alarm-LED and the built-in vibration alarm facilitate the ease of use of this instrument while the ballistic nylon holster and rubber shock protection over-pack ensure its durability and reliability.





**Content of the RadEye PRD Safety Kit
425067193**

- 2 Holster for the RadEye PRD
- 3 Universal RadEye PRD "Snap in" adapter
- 4 RadEye PRD Test Adapter (Natural Lutetium Oxide, shaped to match the RadEye)
- 5 Short Handle for "Snap in" of the universal RadEye PRD adapter
- 6 USB to the RadEye PRD's IR port adapter cable
- 7 RadEye PRD desktop stand with mounting support of the adapter cable
- 8 Special application specific software and handbook

The RadEye has to be ordered separately!

1 *High Sensitivity Gamma Pager*

RadEye PRD: up to 25 mR/h # 4250671
up to 250 μ Sv/h # 425067120

RadEye PRD-ER: up to 10 R/h # 425067102
up to 100 mSv/h # 425067122

Options:

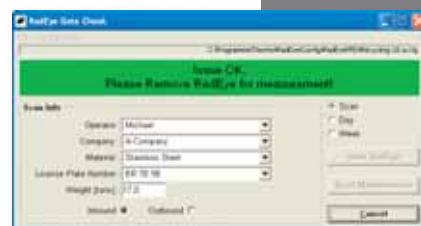
- # 425067076: 1.2 m Extension
- # 425067076-59: 59" Extension (America only)
- # 425067077: 4.0 m Telescopic Extension

Scanning for Contamination is Assurance of Quality

If the RadEye PRD is used for the manual scanning of in- or outbound vehicles, then the application specific RadEye Software documents via printing of the scanning protocol that no radiation was found in the inspected load. Additional text information such as "Company", "Material", "Weight", etc. may be entered and stored or printed with the measurement values.

Recording & Documentation

- Vehicle surface scans
- Work days / weeks
- Simple area monitoring



RadEye Area Monitor

The wall mounted RadEye Area Monitor extends the application range to a convenient and cost-effective area monitor. In case of exceeding a preset threshold the system sets off an audible/optical alarm and the RadEye can be immediately used as a portable instrument. # 4250680

Daily or weekly functional check

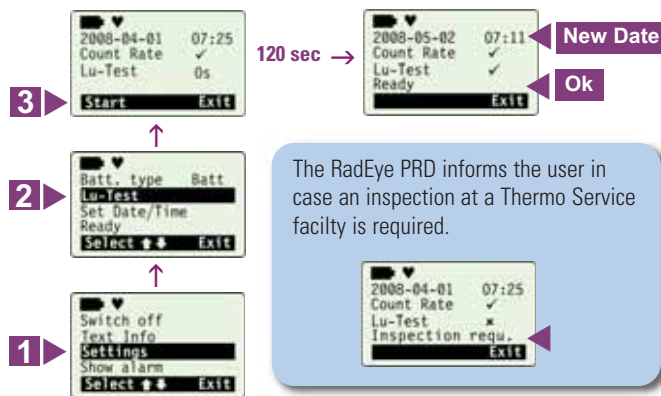
Just attach the Lutetium Test Adapter to check for proper count rate and the verification of the optical, audible and vibration alarm.



Fine adjustment of the detector performance

The "Lu-Test" function allows to fine tune the detector performance automatically within 2 minutes.

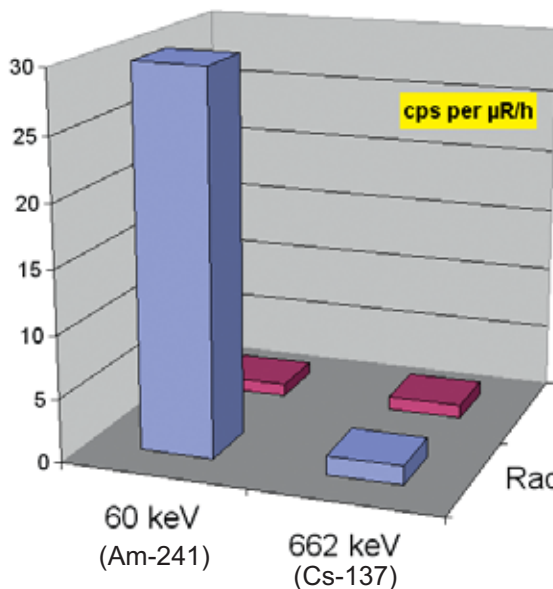
The "Lu-Test" should be performed at least every 3 months. The date and the time of the last adjustment is stored.



The RadEye PRD informs the user in case an inspection at a Thermo Service facility is required.

Gamma radiation loses energy while passing through shielding materials. E.g. a very strong Cs-137 source (original gamma energy 662 keV) may be gamma radiation well below 100 keV once the radiation has passed through thick layers of metal. Thus it is absolutely key to use an instrument with excellent low energy performance.

Performance Advantage



RadEye Features

- Weighs only 160 g (96 x 61 x 31 mm)
- Large Graphic Display
- Simple and Intuitive User Interface
- Easily Configured for Specific Tasks
- Durable and Shock Resistant
- Accurate with Excellent EMI Immunity
- Low Power Technology (500 h on 2 AAA Batteries)
- Rechargeable Standard-Size Batteries can be used

Pager according to minimum ANSI 42.32 and IEC 62401 requirements

This specification sheet is for informational purposes only and is subject to change without notice. Thermo Fisher Scientific makes no warranties, expressed or implied, in this product summary. © 2008 Thermo Fisher Scientific Inc. All rights reserved. LITRadEye Safety Kit-e-V1.6_26March2009

www.thermo.com

USA:
27 Forge Parkway
Franklin MA 02038
USA
+1 (800) 274-4212
+1 (508) 520 2815 fax

UK:
Bath Road
Beenham, Reading RG7 5PR
England
+44 (0) 118 971 2121
+44 (0) 118 971 2835 fax

Germany/International:
Frauenauracher Straße 96
D 91056 Erlangen
Germany
+49 (0) 9131 998-0
+49 (0) 9131 998-205 fax

Thermo
SCIENTIFIC