



SRS PROFILER™

Redefining Radiosurgery QA

Sophisticated beam QA for stereotactic radiosurgery fields measuring multiple beam parameters in a single exposure

The SRS PROFILER Advantage

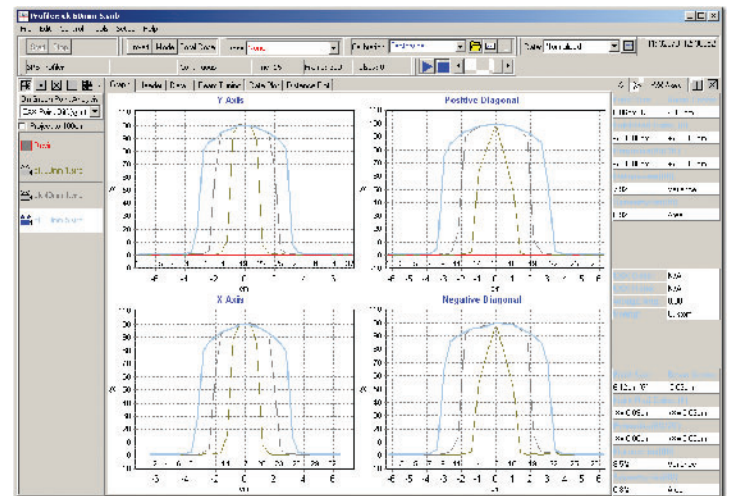
- ▶ The first QA array designed for cone based SRS
- ▶ Sets up in minutes and easy to use
- ▶ Attaches to the Accuray® CyberKnife® birdcage
 - ▶ Measure at any node position
- ▶ Streamlines acceptance testing, commissioning, and routine QA tests
- ▶ Operation using PROFILER analysis software
- ▶ User calibration
 - ▶ No need to send back to manufacturer
- ▶ Accepted and proven for clinical and factory settings
- ▶ On Accuray® Recommended Equipment List

Software

- ▶ Real time analysis
- ▶ Analyze and compare up to 15 profiles at once
- ▶ Movie modes with real time playback
 - ▶ Profile / beam tuning
 - ▶ Beam data versus time: Total dose, dose rate, dose/pulse, pulse/second, and point symmetry
- ▶ Import water tank measurements
- ▶ One measurement checks multiple parameters
 - ▶ Output, flatness, symmetry, field size, beam center, penumbra width, Light:Radiation coincidence
- ▶ Advanced applications
 - ▶ Includes beam constancy, steering, diagnostics, collimator and rotational sag QA

Hardware

- ▶ 125 SunPoint™ Diode Detectors
 - ▶ Highest sensitivity (32.0 nC/Gy), smallest size (0.64mm²)
- ▶ 50ms update interval
- ▶ Four axis geometry
 - ▶ Central axis detector
 - ▶ X, Y and diagonal axes
 - ▶ 4mm detector spacing with 2mm radial spacing
- ▶ Single power/data cable



Features and Specifications



On Accuray Recommended Equipment List

| | |
|--|---|
| Detector type: | SunPoint Diode Detectors |
| Detector quantity: | 125 total on four axes |
| Axes length (mm): | 143 (X), 127 (Y), 124 (Diagonals) |
| Detector spacing (mm): | 4.0, 2.0 with radial offset |
| Active detector area (mm ²): | 0.64 |
| Active detector volume (cm ³): | 0.000019 |
| Detector sensitivity (nC/Gy): | 32.0 |
| Sampling rate (ms): | 50 |
| Detector stability: | 0.5%/kGy at 6MV |
| Dose rate dependence: | ± 1%, 75 - 250cm SSD |
| Radiation measured: | <ul style="list-style-type: none"> Electrons: 4 MeV to 25 MeV Photons: Co-60 to 25 MV |
| Dose rate limit (Gy/min): | >20 |
| Radial field size (cm): | 10, 20, 40, 60, 80, 100, and 120 |
| Inherent buildup (g/cm ²): | 0.5 |
| Operating system: | Windows 2000, XP 32-bit, or Vista 32-bit |
| Dimensions (cm) / weight (kg): | 4.3 x 15.0 x 33.5 / 1.5 |
| Number of connection cables: | Single power/data cable |



SunPoint™
PRECISION QA

All data used is best available at time of publication. Data is subject to change without notice. All Content ©2010, Sun Nuclear Corporation. All Rights Reserved. Accuray and CyberKnife are registered trademarks of Accuray Inc.